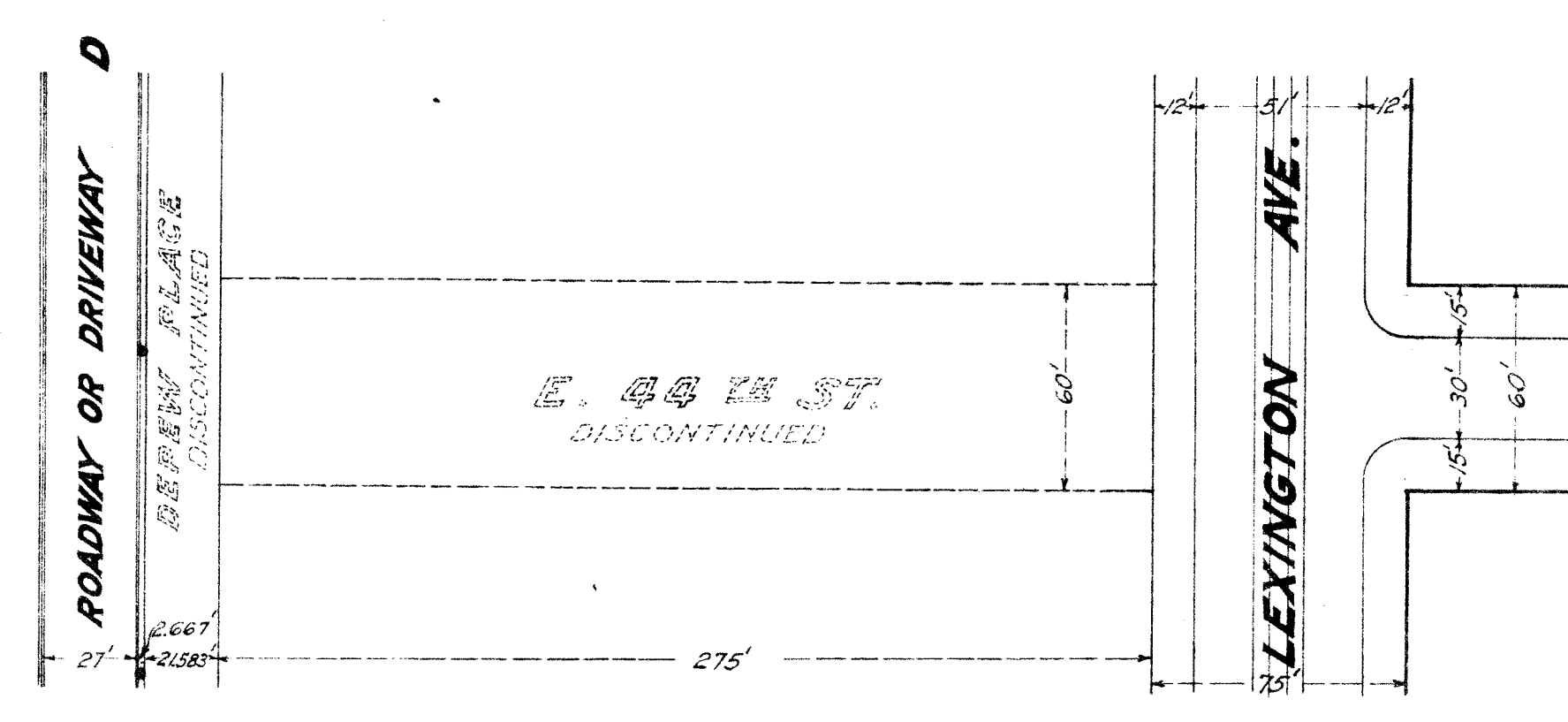
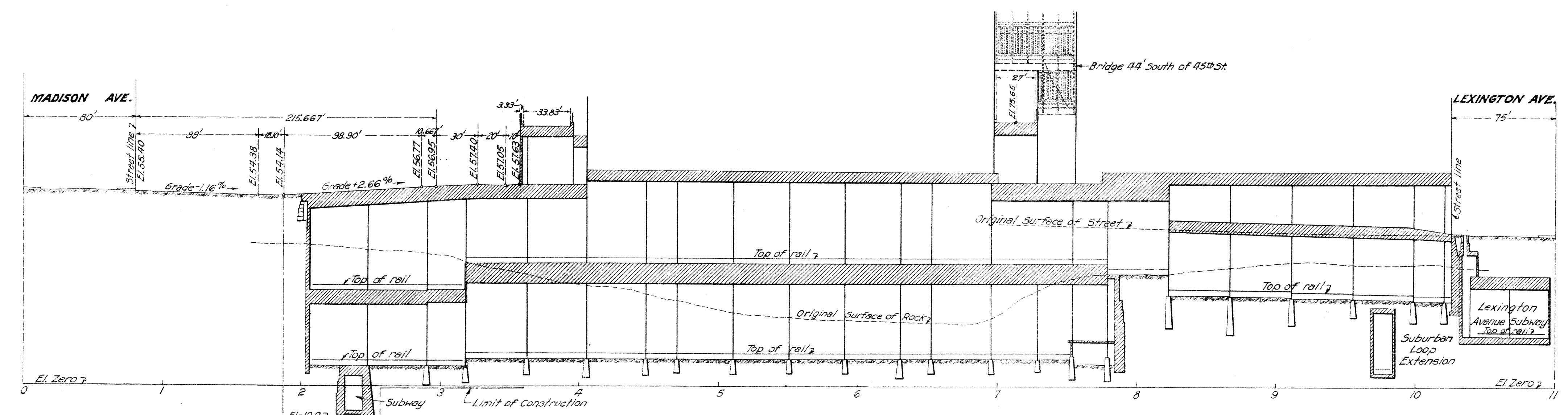


PLAN

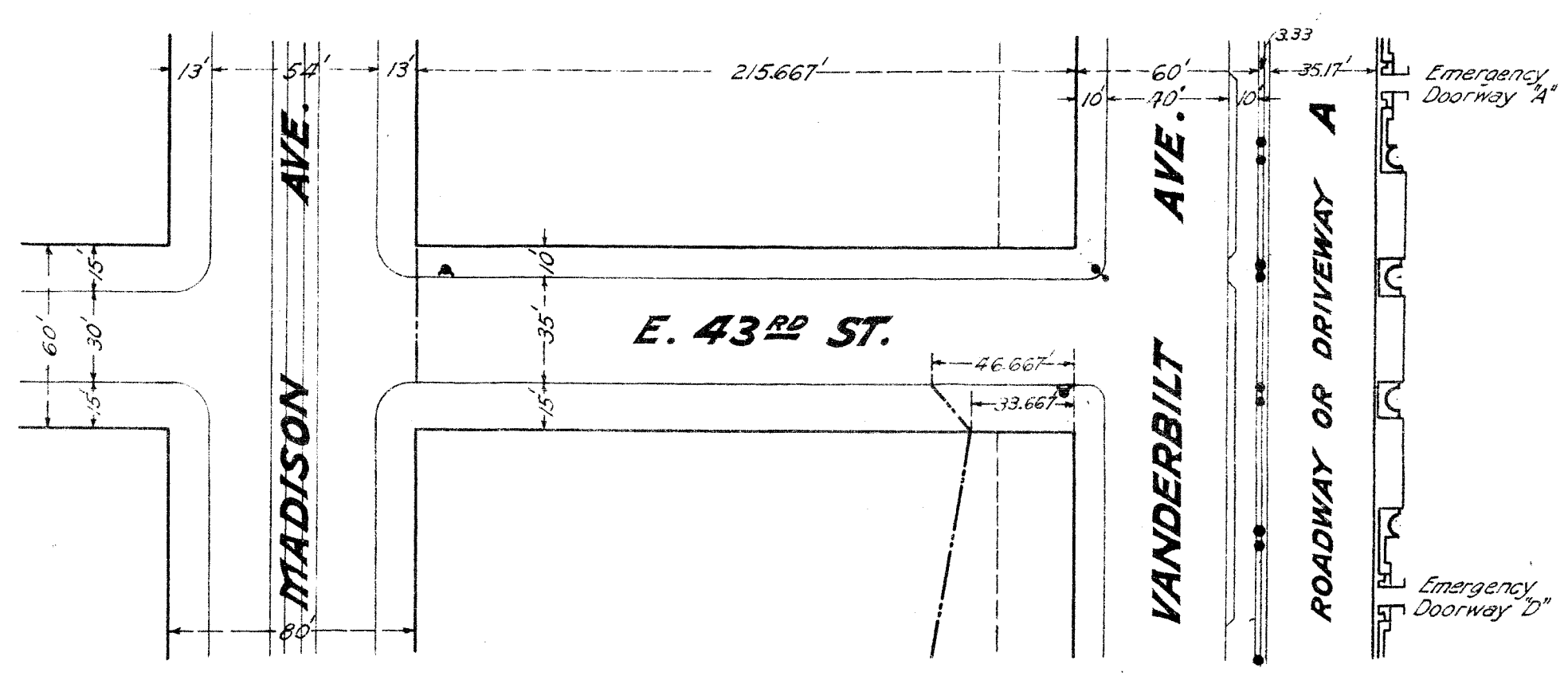


- NOTES:**
1. Elev. 20.3 mean high water in East river at Foot of East 26th St New York City
  2. 5th Bishop's Crook Lamp shown thus
  3. Double Lantern Standards shown thus
  4. Single Lantern Standards shown thus
  5. Bracket Lanterns shown thus
  6. Hydrants shown thus

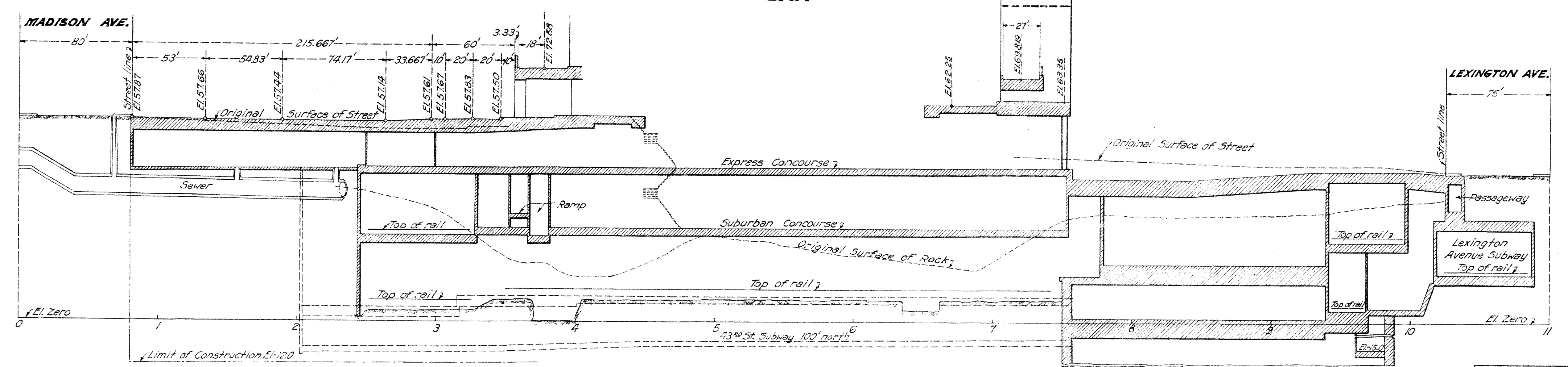
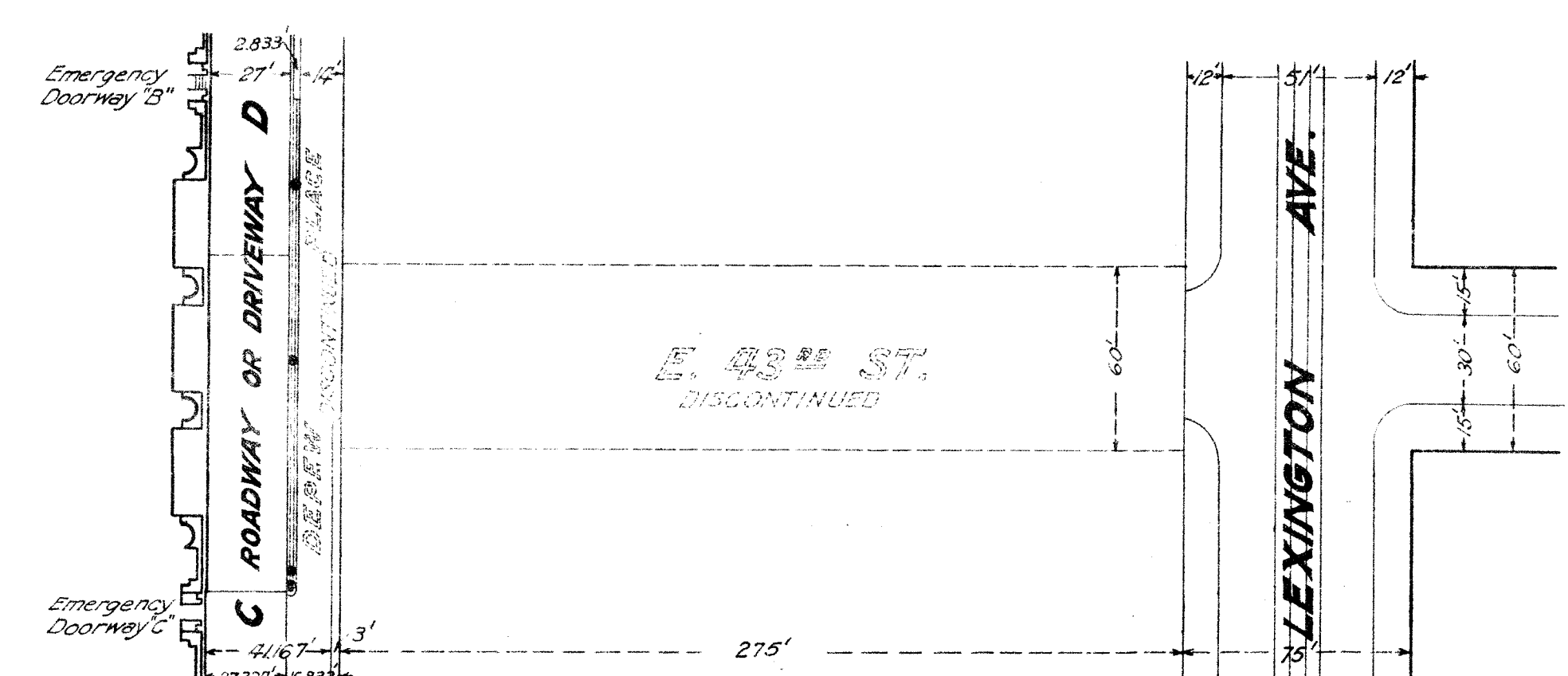
- KEY:**
- Sub-Surface rights required and heretofore granted
  - Elevated Roadway Easement heretofore granted to City of New York
  - Portion of Elevated Roadway Easement to be released and new Easement granted in substitution thereof
  - Roadways or Driveways and Sidewalks or Passageways, Easements to be granted to City of New York



**PROFILE OF E. 44th ST.**  
ON CENTER LINE OF STREET  
Hor. Scale: 1 in. = 50 ft.  
Vert. Scale: 1 in. = 20 ft.



PLAN



**PROFILE OF E. 43rd ST.**  
ON CENTER LINE OF STREET  
Hor. Scale: 1 in. = 50 ft.  
Vert. Scale: 1 in. = 20 ft.

**N.Y.C.R.R. CO.**  
Leased and Operated Lines  
**GRAND CENTRAL TERMINAL IMPROVEMENTS**  
NEW YORK CITY.  
Plans and Profiles Showing Alterations or Changes in

**FORTY-THIRD AND FORTY-FOURTH STREETS**

and in the grade or grades thereof, and showing the grade or depth to which the tracks and structures of the New York and Harlem Railroad Company are to be constructed underneath said streets, and modifying the plans and profiles which were prepared by the New York Central and Hudson River Railroad Company and submitted in duplicate to the Board of Estimate and Apportionment of the City of New York for its approval on the 26th day of January, 1911, and approved by the said Board of Estimate and Apportionment on the 15th day of June, 1911, pursuant to Chapter 425 of the Laws of 1903, as amended by Chapter 639 of the Laws of 1904, and by Chapter 555 of the Laws of 1910, and also showing alterations, changes and additions other than the alterations, changes and additions authorized by sections 1, 2 and 3 of said Chapter 425 of the Laws of 1903, and also showing amendments and modifications authorized by Chapter 425 of the Laws of 1903, as further amended by Chapter 766 of the Laws of 1923.

**PREPARED BY THE NEW YORK CENTRAL RAILROAD COMPANY**  
and submitted in duplicate to the  
**BOARD OF ESTIMATE AND APPORTIONMENT OF THE CITY OF NEW YORK**  
for its approval on the 10th day of April, 1924,  
pursuant to Chapter 425 of the Laws of 1903, as  
amended by Chapter 766 of the Laws of 1923,  
**THE NEW YORK CENTRAL RAILROAD COMPANY.**

By *John F. Hylan*, President,  
STATE OF NEW YORK, S.S.:  
COUNTY OF NEW YORK.

We, the undersigned, JOHN F. HYLAN, Mayor of the City of New York, and CHARLES L. CRAIG, Comptroller of the City of New York, hereby certify that the resolution of which the following is a copy was duly adopted by a majority of the votes of the Board of Estimate and Apportionment of the City of New York, at a meeting duly held on the 10th day of April, 1924.

**RESOLVED**, that the plans and profiles showing alterations or changes in Forty-third and Forty-fourth streets and in the grade or grades thereof, and showing the grade or depth to which the tracks and structures of the New York and Harlem Railroad Company are to be constructed underneath said streets, and modifying the plans and profiles which were prepared by the New York Central and Hudson River Railroad Company and submitted in duplicate to the Board of Estimate and Apportionment of the City of New York for its approval on the 26th day of January, 1911, and approved by the said Board of Estimate and Apportionment on the 15th day of June, 1911, pursuant to Chapter 425 of the Laws of 1903, as amended by Chapter 639 of the Laws of 1904, and by Chapter 555 of the Laws of 1910, and also showing alterations, changes and additions other than the alterations, changes and additions authorized by sections 1, 2 and 3 of said Chapter 425 of the Laws of 1903, and also showing amendments and modifications authorized by Chapter 425 of the Laws of 1903, as further amended by Chapter 766 of the Laws of 1923, prepared by the New York Central Railroad Company and submitted in duplicate to the Board of Estimate and Apportionment of the City of New York for its approval on the 10th day of April, 1924, pursuant to Chapter 425 of the Laws of 1903, as amended as aforesaid, be, and the same are hereby approved.

Dated Dec. 28, 1923.

Approved  
*John F. Hylan* Chief Engineer  
*Charles L. Craig* Vice President

*John F. Hylan* Mayor of the City of New York.  
*Charles L. Craig* Comptroller of the City of New York.

A TRUE COPY OF A RESOLUTION ADOPTED BY THE BOARD OF ESTIMATE AND APPORTIONMENT ON APRIL 11, 1924.

*John F. Hylan*  
Secretary.

APPROVED  
*Charles L. Craig*  
Consulting Engineer,  
Borough of Manhattan.  
*John F. Hylan*  
Chief Engineer, Board of  
Estimate and Apportionment.

N.Y.C.R.R. Co.  
Approved *John F. Hylan* Designing Engineer  
Approved *Charles L. Craig* S.C.S. Architects

Approved *John F. Hylan* Terminal Engineer